













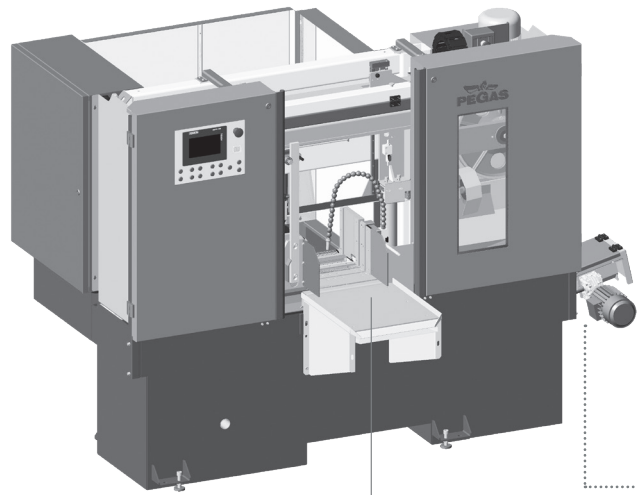
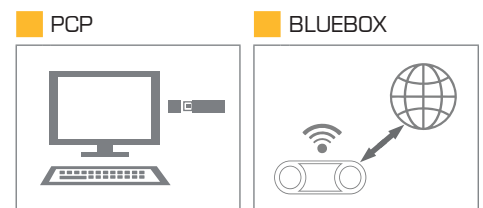
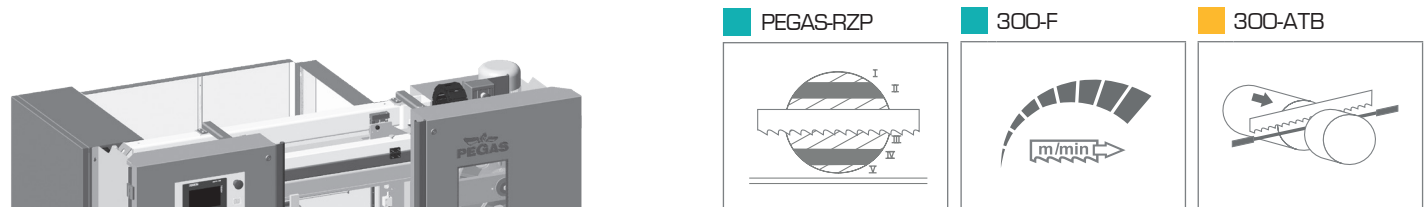
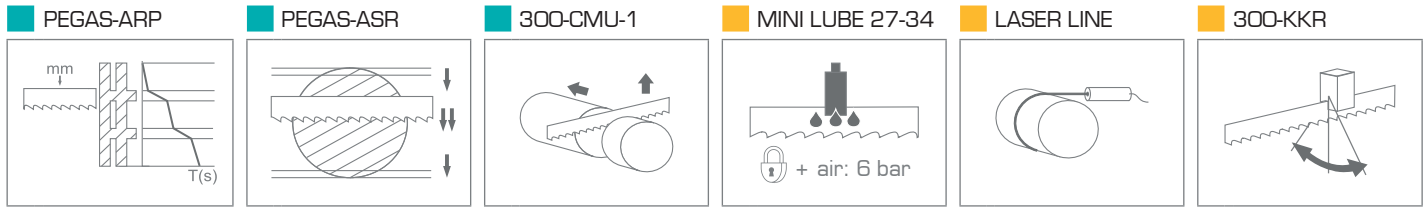
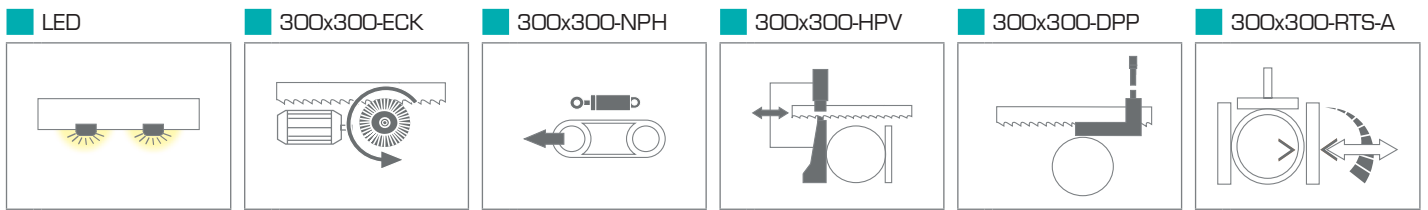
300x300 HERKULES X-CNC

 mm	 mm	 a b a x b	 a b a x b
300	250*	300x300	300x220

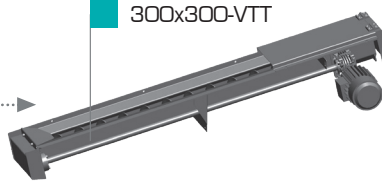
	 kW	 m/min	 mm	 kg	
3x400 V	3,0	20-100	4520x34x1,1	1420	
Lmin	Lmax	Bmin	Bmax	H	V
2230	2510	1450	2280	1800	800

* doporučená hodnota. Při překročení doporučeného maximálního průměru není možné garantovat výkon pilového pásu!
/recommended value. The blade performance cannot be guaranteed when the recommended diameter is exceeded!

 a x b - řezání svazků bez horního přitlaku / cutting of the bundle without top clamping/



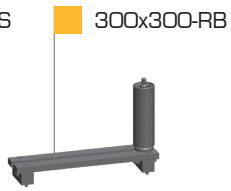
300x300 GPZ



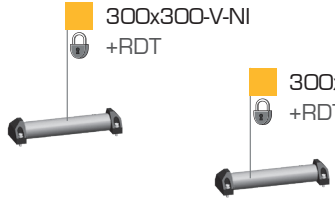
300x300-VTT



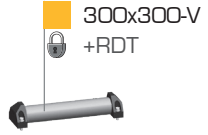
300x300-RDS +RB



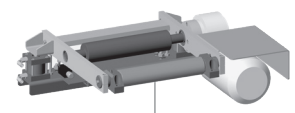
300x300-RB



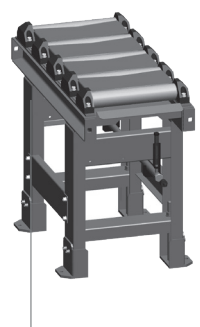
300x300-V-NI +RDT



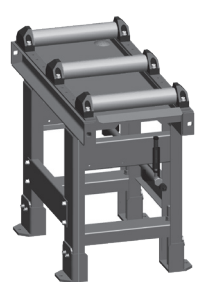
300x300-V +RDT



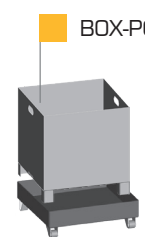
VZM-350



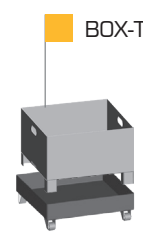
300x300-RDZ 1000/350



300x300-RDT 1000/350



BOX-PCS



BOX-TRI



BOX-TAH

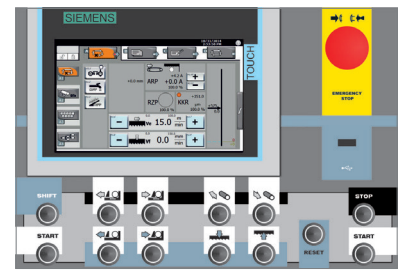
300x300 HERKULES X-CNC

STANDARD OPTION



PEGAS-GONDA s.r.o., Čs.armády 322, 684 01 Slavkov u Brna, CZECH REPUBLIC
 Tel: 00420-544 221 125 (126), Fax: 00420-544 227 389, E-mail: pegas@gonda.cz
 www.pegas-gonda.cz

- výrobce si vyhrazuje právo provádět změny technických údajů, technické údaje odpovídají 1.3.2018
 / producer has the right to make changes of technical data, technical data are valid on 1.3.2018 /
 - pila na fotografii není vždy v základním provedení, uvedené rozměry odpovídají stroji v základním provedení
 / the machine in the picture is not always in the basic version, mentioned diameters are for machine in basic version /



CONTROL PANEL:SIEMENS (X-CNC)