



230x280 SHI-LR

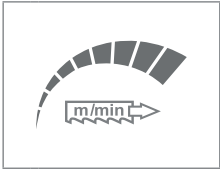
	0°	45°	60°	45°	$\frac{b}{a \times b}$	$\frac{b}{a \times b}$ HP
	230	190	100	170	x	x
	150*	110*	80*	110*	x	x
	280x210	180x170	100x70	170x120	280x120	230x100

3x400V	1,5	20-100	2720x27x0,9		420
L	B	Hmin	Hmax	V	
1860	1050	1370	1890	785	

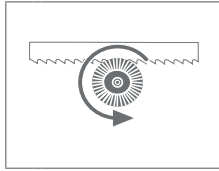
* doporučená hodnota. Při překročení doporučeného maximálního průměru není možné garantovat výkon pilového pásu!
/recommended value. The blade performance cannot be guaranteed when the recommended diameter is exceeded!

$\frac{b}{a \times b}$ - řezání svazků bez horního přitlaku / cutting of the bundle without top clamping/

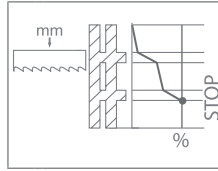
230-F



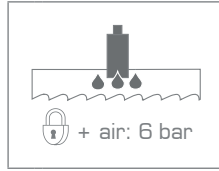
240-CK



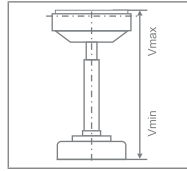
PEGAS-BRP



MINI LUBE 27-34

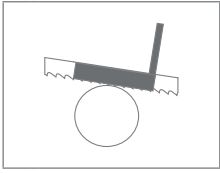


R 290

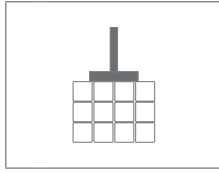


	S (mm)	Vmin (mm)	Vmax (mm)
R	290	760	980

230-DPP



230-HP



OZD 1000
OZD 2000
OZD 3000
OZD 4000
OZD 5000
OZD 6000

OZ 1000
OZ 2000
OZ 3000
OZ 4000
OZ 5000
OZ 6000

OZ 0000



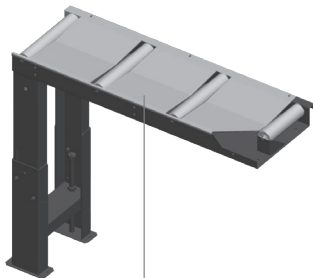
RB 200



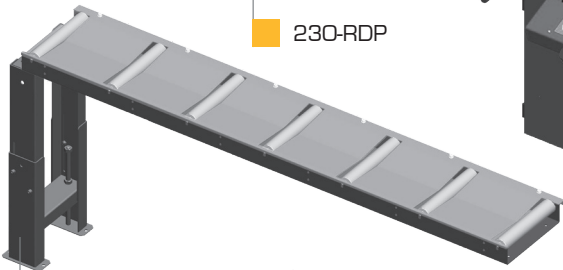
RBS 200/290
+RB



RHS 290
+RBS+RB



230-RDP



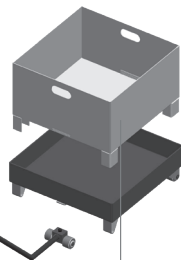
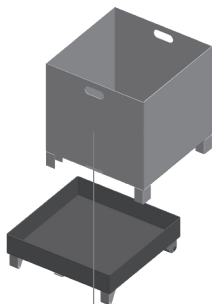
230-OZM



RD VR-290



230-RDZ



RD 2000/290

BOX-PCS

BOX-TAH

BOX-TRI

RD 1000/290

RDN

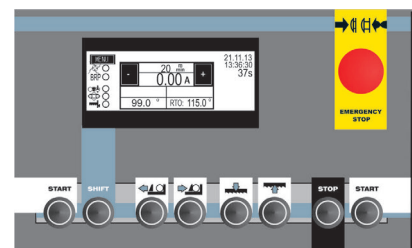
230x280 SHI-LR

STANDARD

OPTION



PEGAS-GONDA s.r.o., Čs.armády 322, 684 01 Slavkov u Brna, CZECH REPUBLIC
Tel: 00420-544 221 125 (126), Fax: 00420-544 227 389, E-mail: pegas@gonda.cz
www.pegas-gonda.cz



CONTROL PANEL: MITSUBISHI

- výrobce si vyhrazuje právo provádět změny technických údajů, technické údaje odpovídají 1.3.2018
/ producer has the right to make changes of technical data, technical data are valid on 1.3.2018 /
- pila na fotografii není vždy v základním provedení, uvedené rozměry odpovídají stroji v základním provedení
/ the machine in the picture is not always in the basic version, mentioned diameters are for machine in basic version /