

# barbaric



## Parts handling

compact - fast - custom-made



[www.barbaric.at](http://www.barbaric.at)

# Ideas that move.

As a successful and dynamic company with headquarters and production facilities in Austria, Barbaric is the first point of contact for sophisticated lifting technology.

Our goal is to provide customers with customized solutions in the areas of panel and parts handling. By using the most modern components developed

in-house, Barbaric is able to realize ergonomic systems with high profitability and short payback times.

Our know-how results in machines with special attention to speed, design and durability.

[www.barbaric.at](http://www.barbaric.at)



-  Return system  
**RTS Compact** Universal, simple return system with maximum benefit
-  Return system  
**RTS Professional** Intelligent return system with and without stacking option
-  Return system  
**RTS Industrial** Industrial return system for working loads up to 100 kg
-  Automatic part handling  
For throughput machines for flexible batch size 1 production
-  Nesting Picker NST The intelligent de-stacking after nesting processing
-  Buffer Storage PBX Buffering of parts in furniture production

Return system

# RTS Compact



**Universal, simple return system with maximum benefit**



## Simple connection to edgebanding machine

The RTS Compact is a standalone system that can be independently connected to any edgebander regardless of the brand. The throughput speed can be continuously adjusted to match the edgebander speed.

The RTS Compact is shipped as a complete package including a control cabinet and is ready for operation immediately after installation.



Product video

- > Connectable with edgebanders of all manufacturers
- > One-man operation of the edgebander possible
- > Highest level of ergonomics
- > Savings in personnel costs
- > Careful material transport
- > Installation time approx. 0,5 days
- > Rotation device for small parts

Optionally with „Extension Conveyor Technology RTS Compact“ for easy turning of parts during transverse edging.

Can be optionally equipped with the „Ergonomics Package RTS Compact“. A lifting table and an air cushion table are used at the end of the return conveyor. This option enables ergonomic working.

## Conveyor

Careful material transport due to plasticcoated special rollers. Special finger conveyors ensure that the parts are safely taken over by the edgebander. The longitudinal measurement of the parts is carried out in the integrated control unit. An electrical connection to the edgebander is not required.

## Technical data

|                    |   |
|--------------------|---|
| » Working load     | max. 60 kg  |
| » Cycle times      | up to 10 parts/min.   |
| » Throughput speed | 7 - 20 m/min.<br>variable speed<br>optional up to 30 m/min. |

|                    |               |
|--------------------|---------------|
| <b>Panel sizes</b> |               |
| » Length           | 300 - 2800 mm |
| » Width            | 120 - 1300 mm |
| » Thickness        | 8 - 60 mm     |

|                     |                |
|---------------------|----------------|
| <b>Square parts</b> |                |
| » Panel size min.   | 300 x 120 mm   |
| » Panel size max.   | 1300 x 1300 mm |

Panel sizes refer to the type without „RTS Compact conveyor system extension“. Larger parts can be removed manually when edged on 4 sides.

Subject to technical changes.



*Ideas that move.*

Return system

# RTS Professional



## Intelligent return system with and without destacking function



## Manipulator

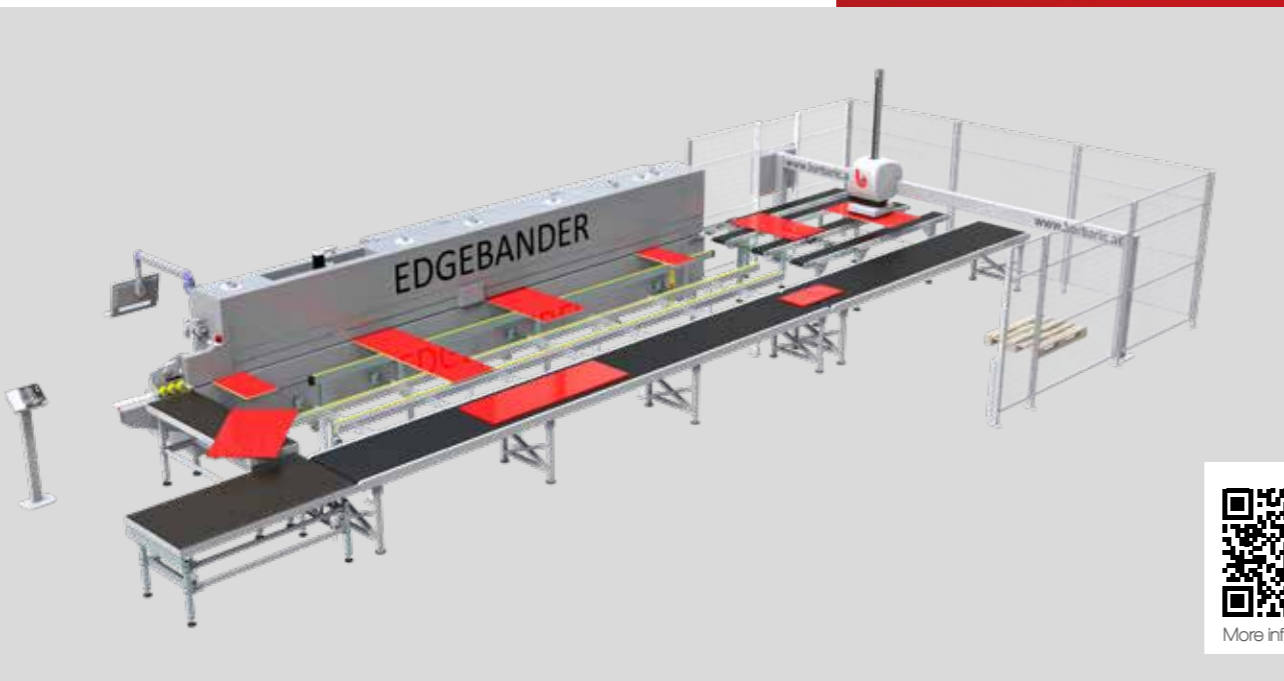
- > Automatic adjustment of machine speed depending on part size
- > Measurement of the parts during takeover from the edgebander
- > High speed due to independent positioning of the manipulator in the center of the parts
- > Standard speeds of 10 - 20 m / min.
- > Optional transfer of the throughput speed
- > Machine visualization on the touchscreen display

## Modular and customer-specific production

Through our intelligent and modular product design we can assemble an individual and ideal solution for fast handling at the edgebander. Installation and start-up is quick and easy as all components come preassembled.



RTS Professional



More information

- > Connectable to edgebanders of all manufacturers
- > 90° / 180° turning function
- > One-man operation of the edgebander possible
- > Highest level of ergonomics
- > Savings in personnel costs
- > Careful material transport
- > Optional stacking of finished parts on pallet or conveyor belt possible



## Networking and communication

Optionally, part information and details can be imported from an ERP system or directly be read before the task with a barcode scanner. The control system offers a wide range of communication options to connect to the edgebander.

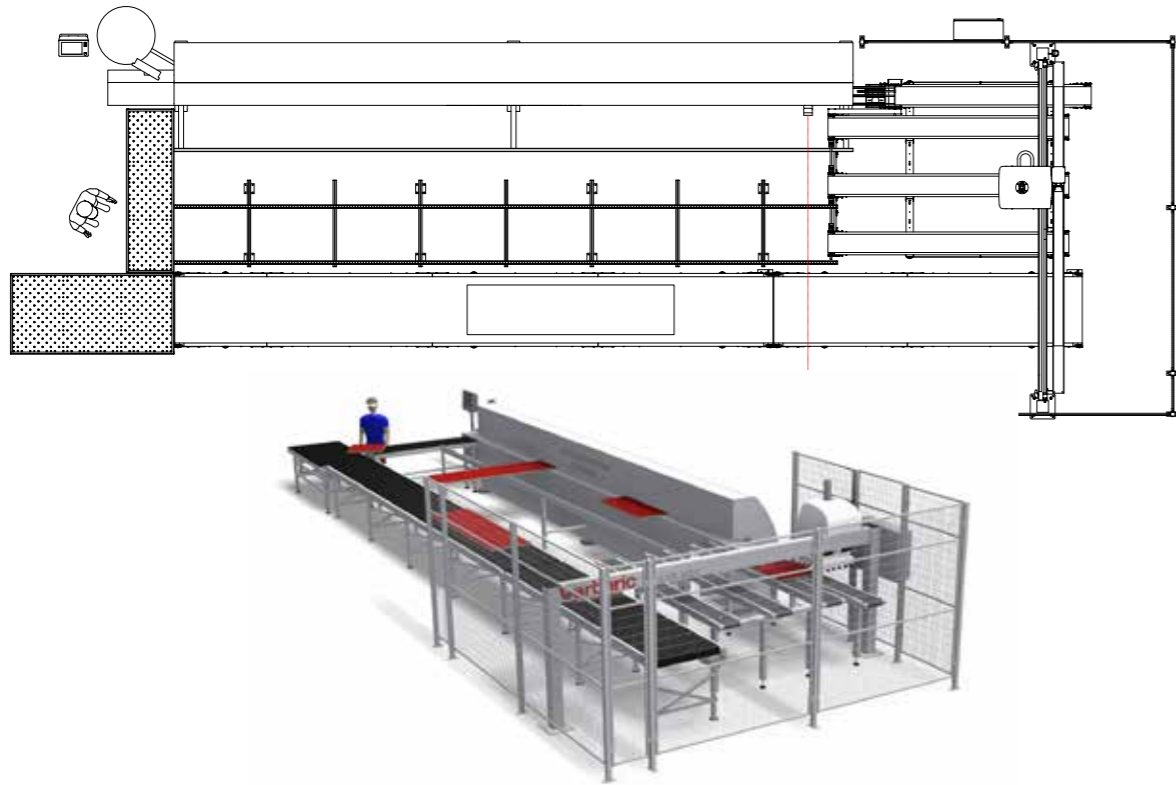
*Ideas  
that move.*

www.barbaric.at

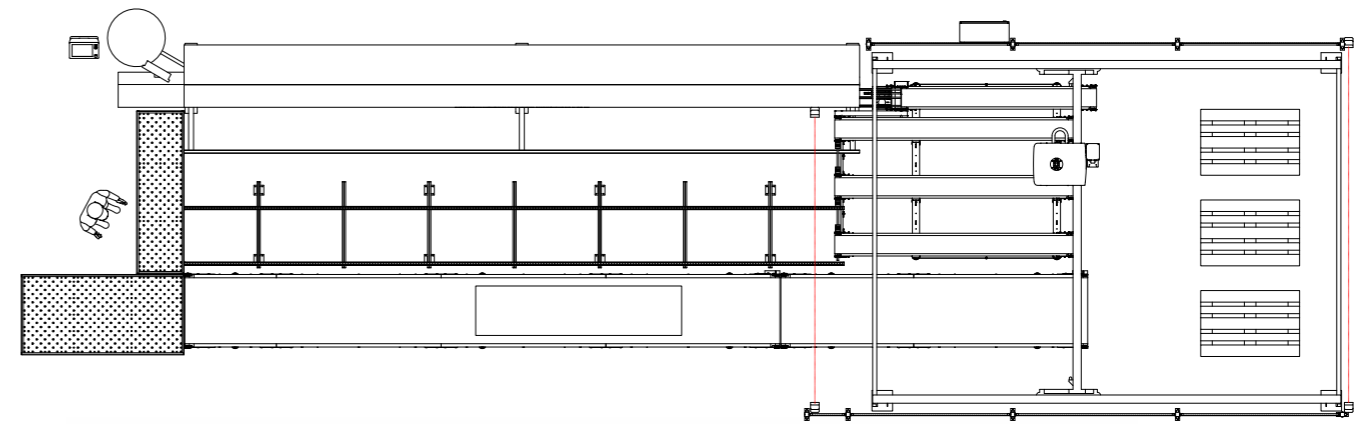
**barbaric**

# Overview of types

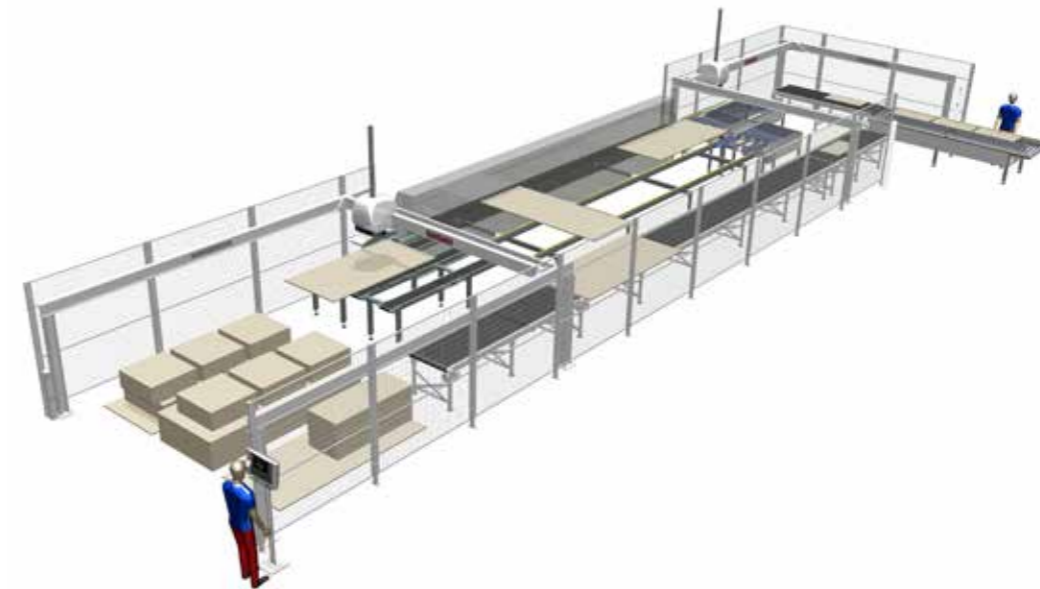
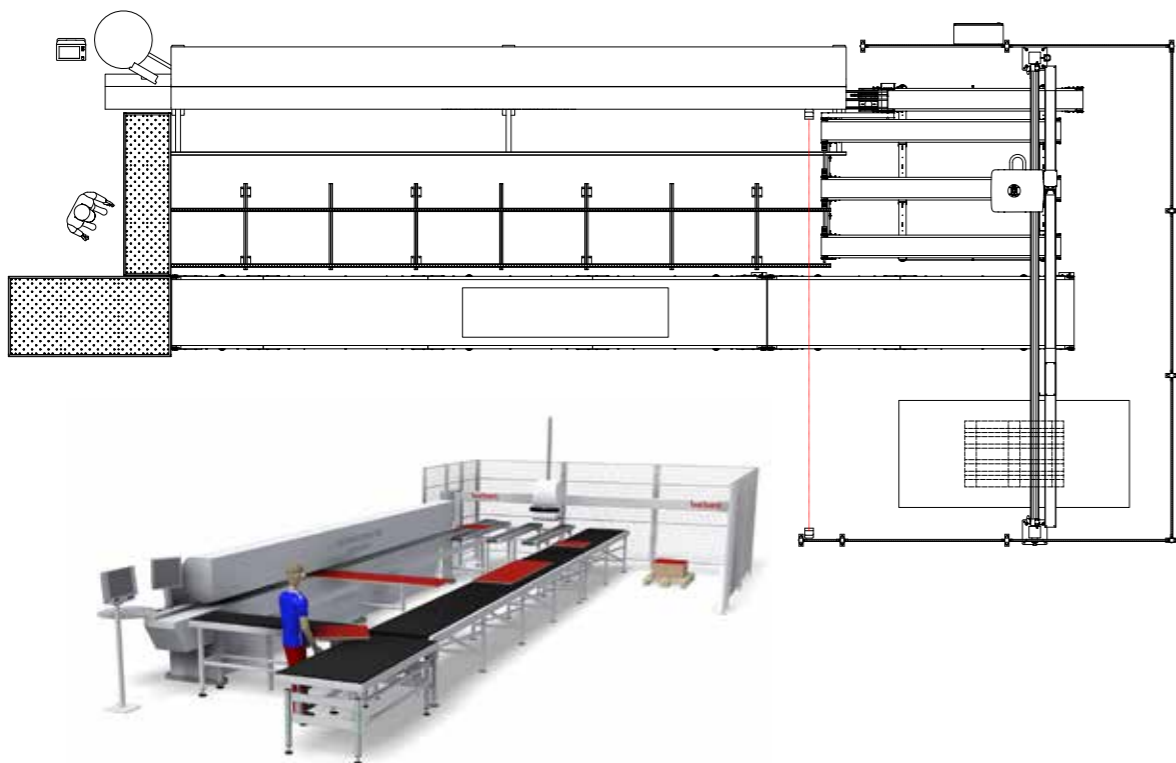
RTS Professional without destacking function



RTS Professional with additional traversing axis (Stacking system)



RTS Professional with destacking function



Customer installation at Sandhas Werkstätten GmbH

**barbaric**

*Ideas  
that move.*



## Control and operation

Various machine configurations can be realized with our standard software.

- > Selection of all motion functions
- > Integrated service tool for remote maintenance
- > Simple, touch-enabled surface
- > Windows-based
- > Extensive error analysis, with optional camera tool
- > Continuous mode for oversize



## Production cycle

The combination of part registration and data connection allows an optimal communication to all machines in the production line.

## Destacking function

Depending on the design of the machine, several stacking stations can be defined. The software also allows formation of interlocked layers for serial parts. Further, lifting tables can be implemented to increase performance.



## Stack editor

In connection with an ERP system, the individual stacking layout can be defined by a wide range of criteria, such as: customers, truck tours or internal logistic requirements. Our special stack editor tool also allows the placement of multiple parts in one layer of the stack. Even after initial set-up the machine operator can easily make changes to the existing stacking layout if needed.



## Dual mode

Our machine also features „dual mode“ in which the machine picks up two parts at simultaneously to maximize throughput. The operator decides if the parts should be stacked or returned.



## Intelligent and modular design

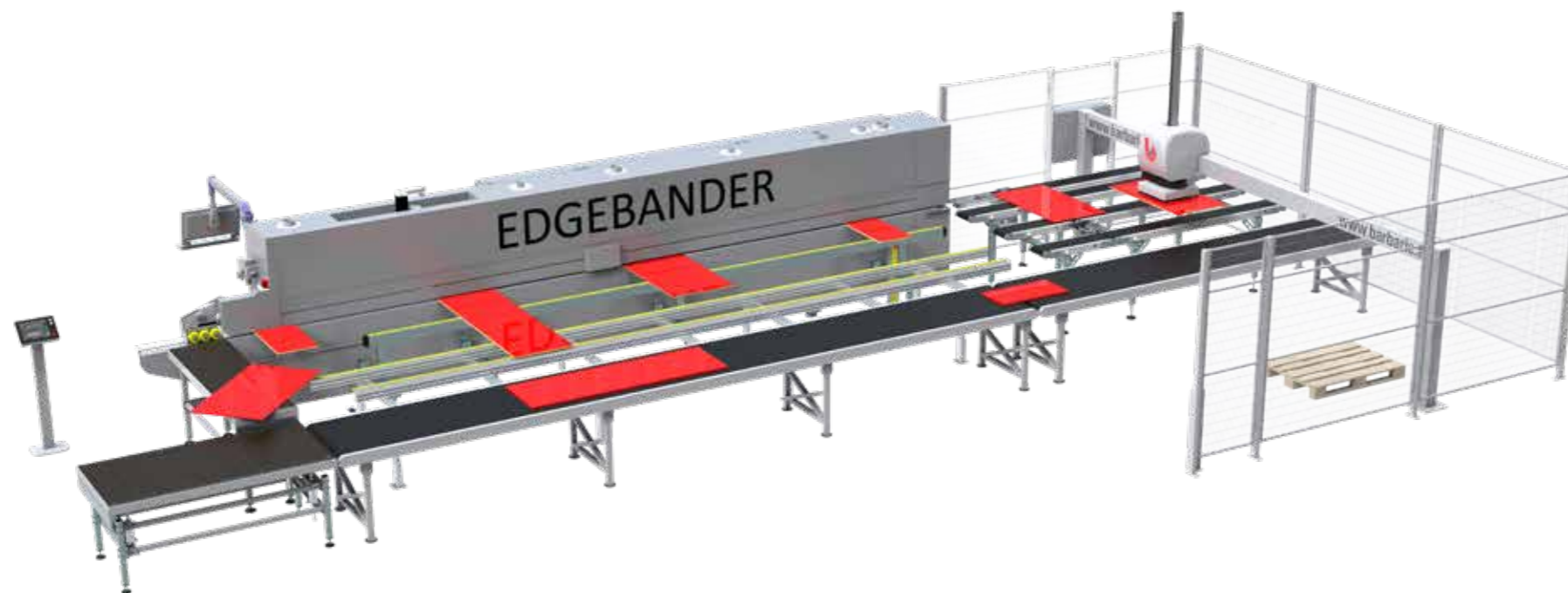
The individual arrangement of our standard components creates customer-specific and cost-efficient solutions for optimized material handling.

*Ideas  
that move.*

[www.barbaric.at](http://www.barbaric.at)

**barbaric**

# RTS Professional



## Technical Data

### Function and operation

Highly efficient production facilities require modern control systems.

- > Visualization on a 17" touch display
- > Intuitive user interface and modern layout
- > Secure part return
- > Continuous mode for oversize
- > Rotation unit 90° / 180°
- > Part measurement
- > Destacking function incl. layer formation
- > Remote maintenance tool preinstalled
- > Signal exchange with edgebander
- > Data connection to edgebander possible

### Your benefits at a glance

- > Gentle manipulation, through vacuum suction technology, no more material damages
- > Flexible in the part size
- > Adaptation to the space conditions
- > Reduced personnel costs
- > Simplification and alleviation of production processes
- > Higher machine utilization
- > Connectable to edgebanders of all manufacturers
- > Retrofitting with existing edgebanders possible
- > Highest flexibility in the production process
- > Payback times of less than one year
- > Fully automated handling of parts

|                               | STANDARD                                | OPTIONAL                                |
|-------------------------------|---|---|
| » Working load                | 60 kg                                   |   |
| » Throughput speed edgebander | 10 - 20 m/min.                          | 30 m/min.                               |
| » Panel size                  | min. 300 x 80 mm<br>max. 2800 x 1300 mm | Larger on request                       |
| » Panel thickness             | 8 - 60 mm                               |   |
| » Cycle times                 | up to 10 parts/min.                     | Dual mode                               |
| » Stroke movement             | electric motor                          |   |
| » Rotation movement           | electric motor                          |   |
| » Stack height over ground    | 800 mm from euro pallet                 | 1200 mm from euro pallet                |
| » Operating pressure          | 6 bar                                   |   |
| » Voltage                     | 400 V, 50 Hz                            | Transformer for<br>480 V / 600 V, 60 Hz |
| » Total output                | 3,5 kW                                  |   |
| » Air consumption             | 420 NI/min.                             |   |

Optional extension tables on pages 18 - 19.  
Subject to technical changes.

Return system

# RTS Industrial

Industrial return system  
for working loads up  
to 100 kg



- > Connectable to edgebanders of all manufacturers
- > 90° / 180° turning function
- > One-man operation of the edgebander possible
- > Highest level of ergonomics
- > Savings in personnel costs
- > Careful material transport
- > Industrial version of the manipulator
- > Optional stacking of finished parts on pallet or conveyor belt possible

*Ideas  
that move.*



That makes the  
difference

The manipulator for the RTS Industrial was designed for use in industrial environments. Loads of 100 kg as well as parts up to 4100 mm in length characterize this type of return system.

## Suction traverse

Due to the adjustable suction crossbeam, large and long panels can be picked up stably. On the other hand, for small parts, the suction cups are reduced to a compact cross beam.



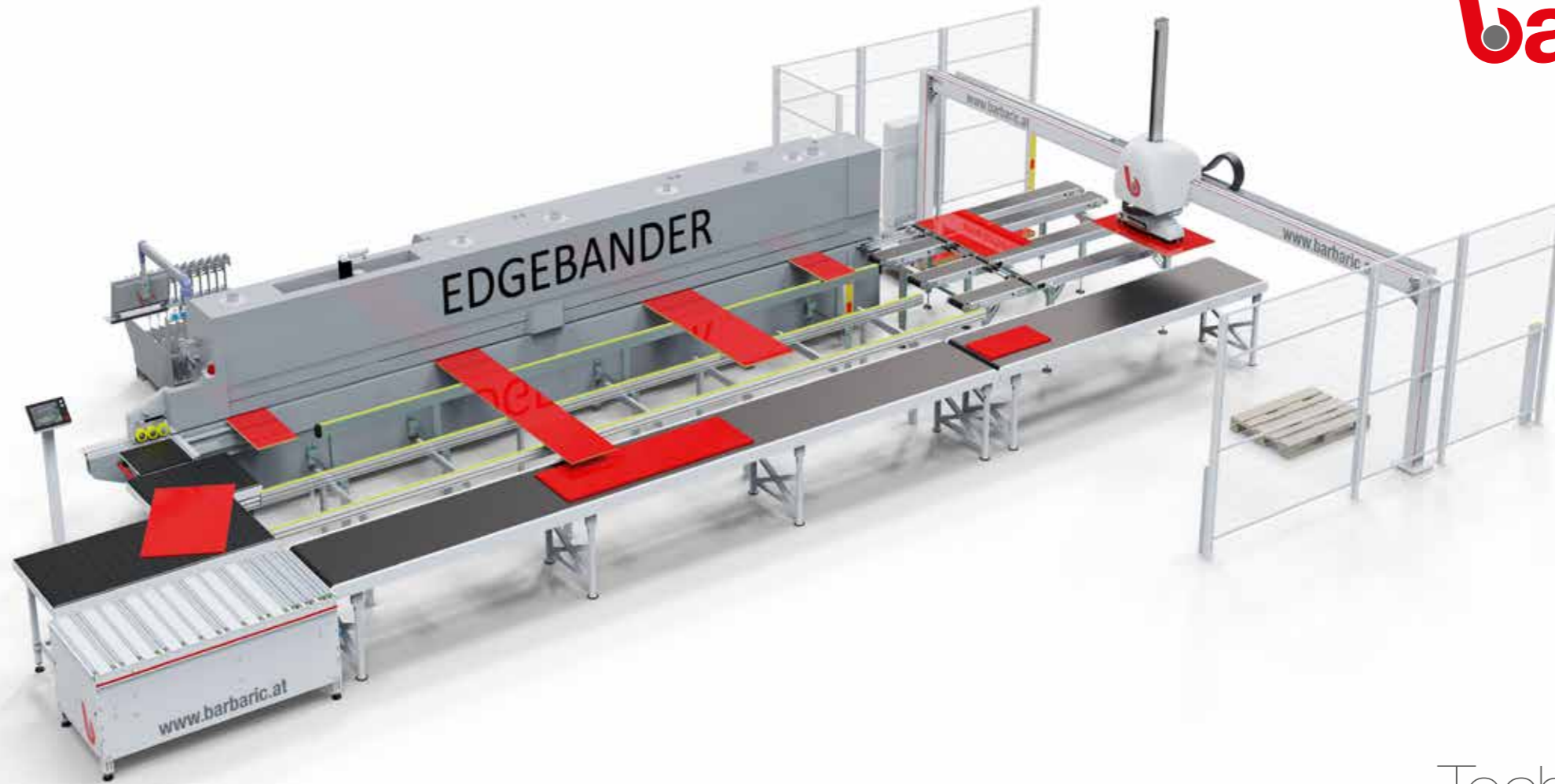
## Data interface

We offer standardized data interfaces to well-known manufacturers of edge banding machines as well as to control systems. By scanning the parts before processing, all part-specific information is retrieved. The system thus operates fully automatically without any operator intervention.

[www.barbaric.at](http://www.barbaric.at)

**barbaric**





## Technical data

### Function and operation

- > Visualization on a 12" touch display
- > Intuitive user interface and modern layout
- > Secure part return
- > Continuous mode for oversize
- > Rotation unit 90° / 180°
- > Part measurement
- > Remote maintenance tool preinstalled
- > Signal exchange with edgebander
- > Data connection to edgebander possible

### Your benefits at a glance

- > Gentle manipulation, through vacuum suction technology, no more material damages
- > Flexible in the part size
- > Adaptation to the space conditions
- > Reduced personnel costs
- > Simplification and alleviation of production processes
- > Higher machine utilization
- > Connectable to edgebanders of all manufacturers
- > Highest flexibility in the production process
- > Payback times of less than one year
- > Fully automated handling of parts

|                               | STANDARD                                | OPTIONAL                                 |
|-------------------------------|---|--|
| » Working load                | 100 kg                                  | on request                               |
| » Throughput speed edgebander | 10 - 20 m/min.                          | 30 m/min.                                |
| » Panel size                  | min. 300 x 80 mm<br>max. 2800 x 1300 mm | max. 3600 x 1300 mm<br>Larger on request |
| » Panel thickness             | 8 - 60 mm                               |  |
| » Cycle times                 | up to 10 parts/min.                     | Dual mode                                |
| » Stroke movement             | electric motor                          |  |
| » Rotation movement           | electric motor                          |  |
| » Operating pressure          | 6 bar                                   |  |
| » Voltage                     | 400 V, 50 Hz                            | Transformer for<br>480 V / 600 V, 60 Hz  |
| » Total output                | 5 kW                                    |  |
| » Air consumption             | 420 NI/min.                             |  |

Optional extension tables on pages 18 - 19.  
Subject to technical changes.



# Operator handling

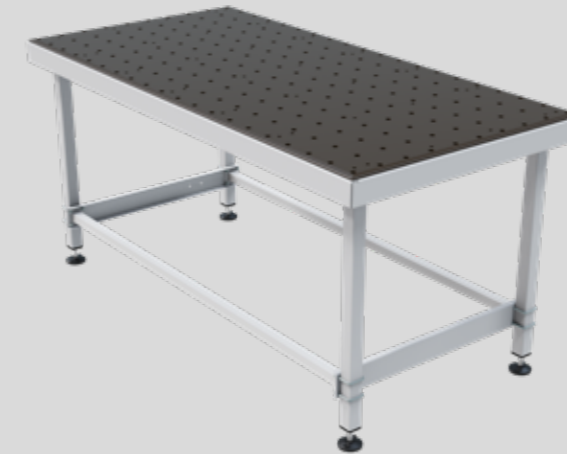
(for RTS Professional and RTS Industrial)



## Inclined running tracks

Optionally, we can install a roller track with an incline after the return conveyor belt. Through gravity the parts slowly roll to the end of the track where they are manually removed by the operator.

Länge: 2000 mm, optional 2500 mm  
Breite: 800 mm



## Air table at the edgebander

In combination with the conveyor system we offer a wide variety of air cushion tables with an integrated blowing unit for easy panel manipulation.

## Lifting table

At the end of the conveyor belt we can optionally install a table with a pneumatic lifting unit. The table features an air cushion surface where parts can be manipulated effortlessly. The lifting unit returns the parts to the original height of the edgebander part entry point for extra smooth and fast operation.

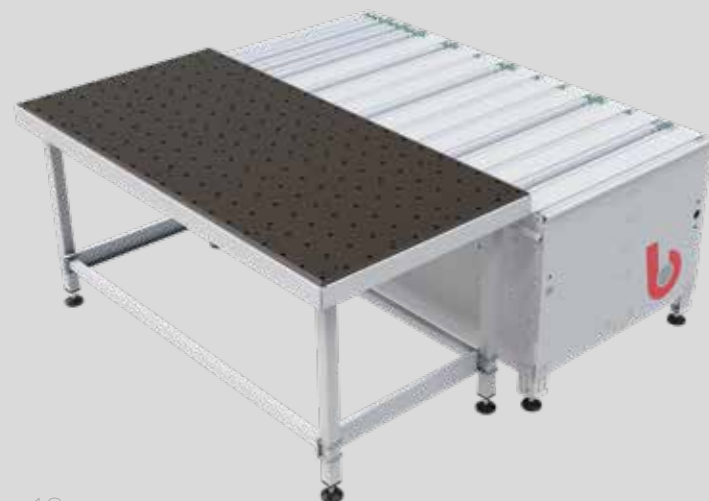
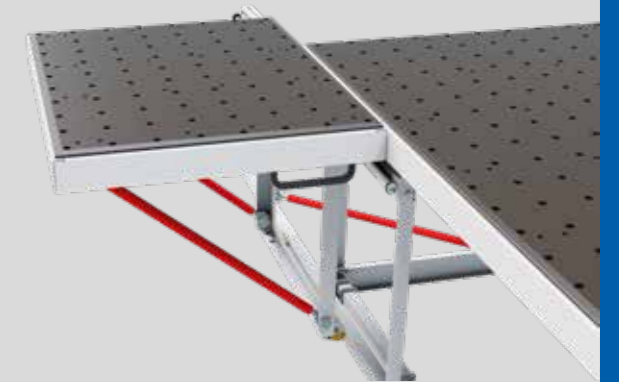
Length: 2000 mm, optional 2500 mm  
Width: 1000 mm



## Sliding table

At the infeed station a sliding air cushion table is installed. This table allows a fast and easy insertion of large parts into the edgebander.

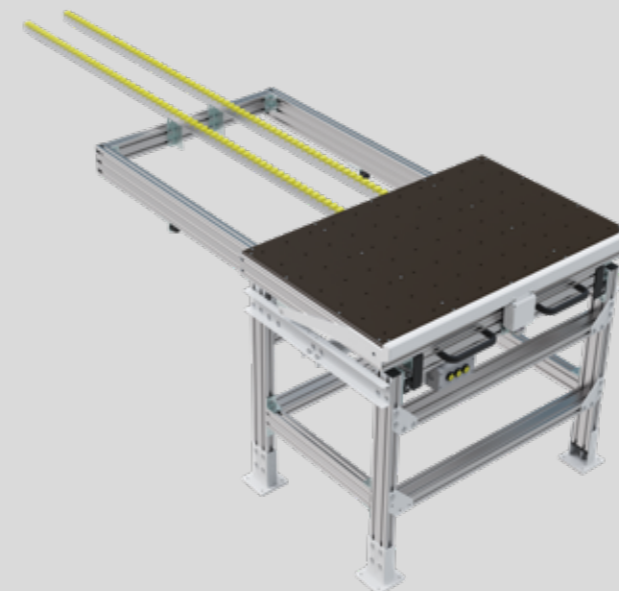
Length: 980 mm  
Width: 780 mm  
Displacement area: 800 mm



## Conveyor

A lifting conveyor is placed at the end of the return conveyor belt. From there the parts are taken over to a roller track and are automatically transported to the point of part entry at the edge bander. The lifting unit returns parts to the edgebanders height allowing the machine operator to effortlessly manipulate even large and heavy parts.

Length: 2000 mm | Width: 2000 mm  
Stroke: 80 mm



## Movable air cushion table with stop system

As a professional feeding aid, we offer a freely erectable air cushion table with a stop system. The table can be moved on machine guides and has an automatic stop system at the same time. With this design, the operator is actively supported when feeding the edge banding machine.

Return system

# Automatic parts handling

## Automatic parts handling for throughfeed machines for flexible batch size 1 production



## Manipulators from the modular system

Our proven standard manipulators of the RTS Professional and RTS Industrial series form the basis for these machines and systems. Depending on the requirements, the manipulators are realized as simple gantries or as 3-dimensional stacking systems. The rotating function as well as a dynamic mode of operation complete the system.

## Conveyor technology

Whether simple conveyor belts, roller conveyors or complex conveyors with lifting cross conveyor technology, we offer a wide range of solutions due to our in-house construction department. The speeds of the conveying elements go up to 70 m/min. to also offer an appropriate performance.



With the Return series from Barbaric, the return of edged parts is already completely standardized. On this basis, we implement fully automatic systems on throughfeed machines such as edge banders or drilling lines. Data connections can be realized individually and form the central control of the entire system.



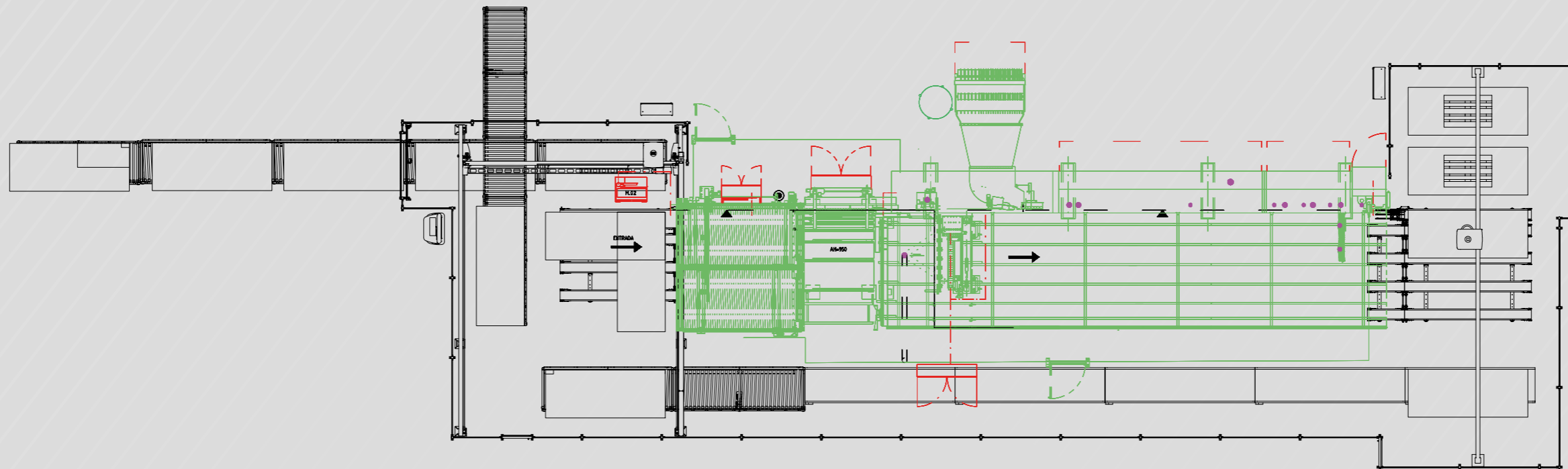
## Stacking patterns

Stacking of finished parts or intermediate buffering are central functions of a batch size 1 system. Finished parts can be stacked on several pallets. With intelligent stacking logic, we create stable stacks that are already pre-sorted for subsequent production.

*Ideas that move.*

[www.barbaric.at](http://www.barbaric.at)

Automatic parts handling



## Networking of the processing machines

The part data must be available at the right time and also passed on to the processing machines. Thanks to a large number of projects, we can offer a large number of different interfaces. Parts tracking within the system is handled by the „BPC“ software module. A corresponding visualization forms the link between machine and operator.

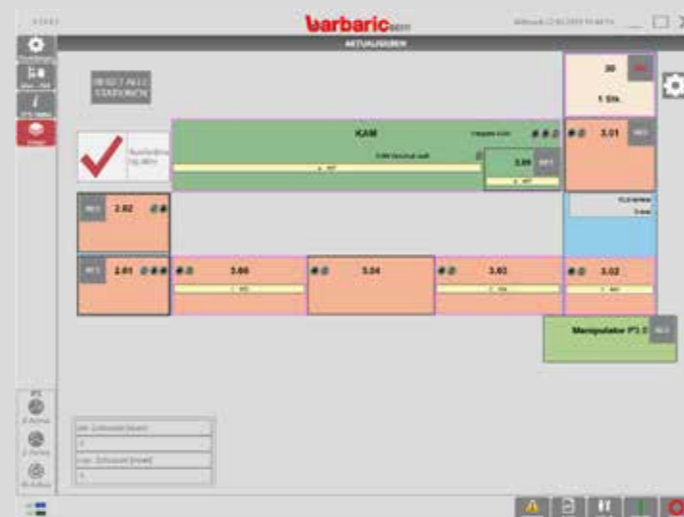


## Performance at an attractive price

Due to our experience in the field of automation and many standard components we can offer attractively priced solutions for craft and small industrial companies. An output of 1000 to 1200 parts per shift is possible.

## Independence

Barbaric, as an independent company, cooperates with all well-known manufacturers of processing machines in furniture production. A considerable advantage for customers. The customer decides which processing machine to use and Barbaric supplies the automation and machine control.



## Highlights

- > Automation of the edge banding machine
- > Flexible batch size 1 production
- > Dynamic motion technology
- > Integration of conveyor technology
- > Part recognition by means of barcode
- > Automatic part feeding into the edgebander
- > Communication with various industry programs
- > Stacking function with various stacking patterns
- > Fully automatic process without operator

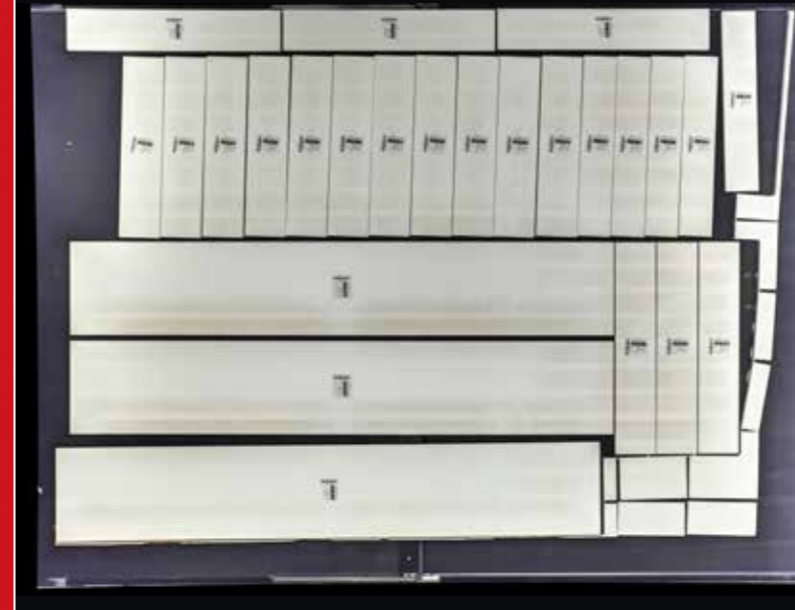
**barbaric**

Parts handling

# Nesting Picker NST



## The intelligent de-stacking after nesting machining



## Fully automatic de-stacking

After CNC machining, the nest is pushed onto the pick-up conveyor. From this pickup position, the nesting picker starts with the part analysis and begins to pick up and stack individual parts. After all parts have been sorted out, remaining residual or edge parts are pushed into a box. This enables a fully automatic process.

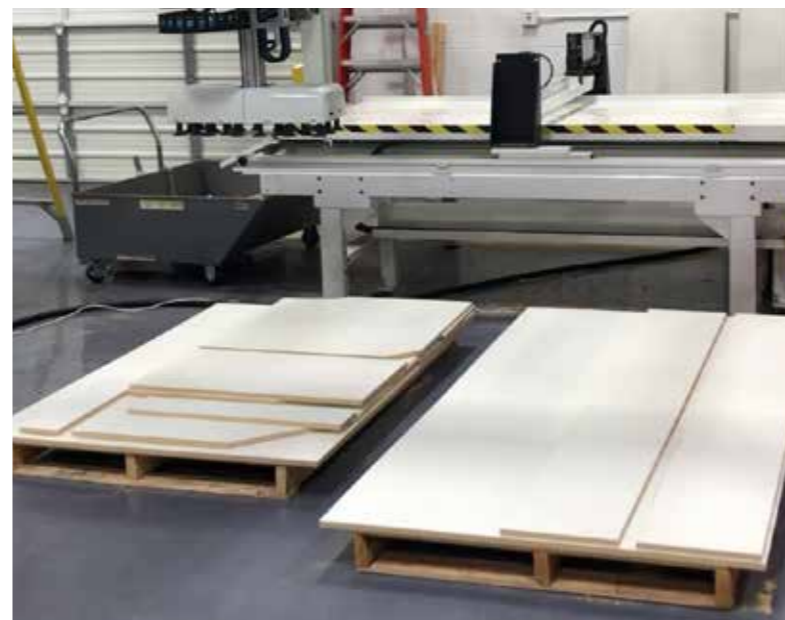


Product video

Nesting machines have become of central importance in furniture production. The Nesting Picker NST enables fully automatic de-stacking and clearing of the finished nested parts. This machine saves valuable working time and increases the productivity of the nesting machine.

## Parts recognition is the key to success

In addition to the data analysis of the nesting plans, the real position of the individual parts is also checked. A camera system with additional light sources is used here. If parts are twisted or the position has changed during push-off, the current position is detected visually and corrected in the software. This ensures a reliable process.



## Stacking images and sorting

Depending on the machine configuration, the finished nested parts can be stacked on individual pallet locations or deposited on further conveyor technology. Sorting and stacking can be selected according to various criteria. Chaotic de-stacking is also possible.

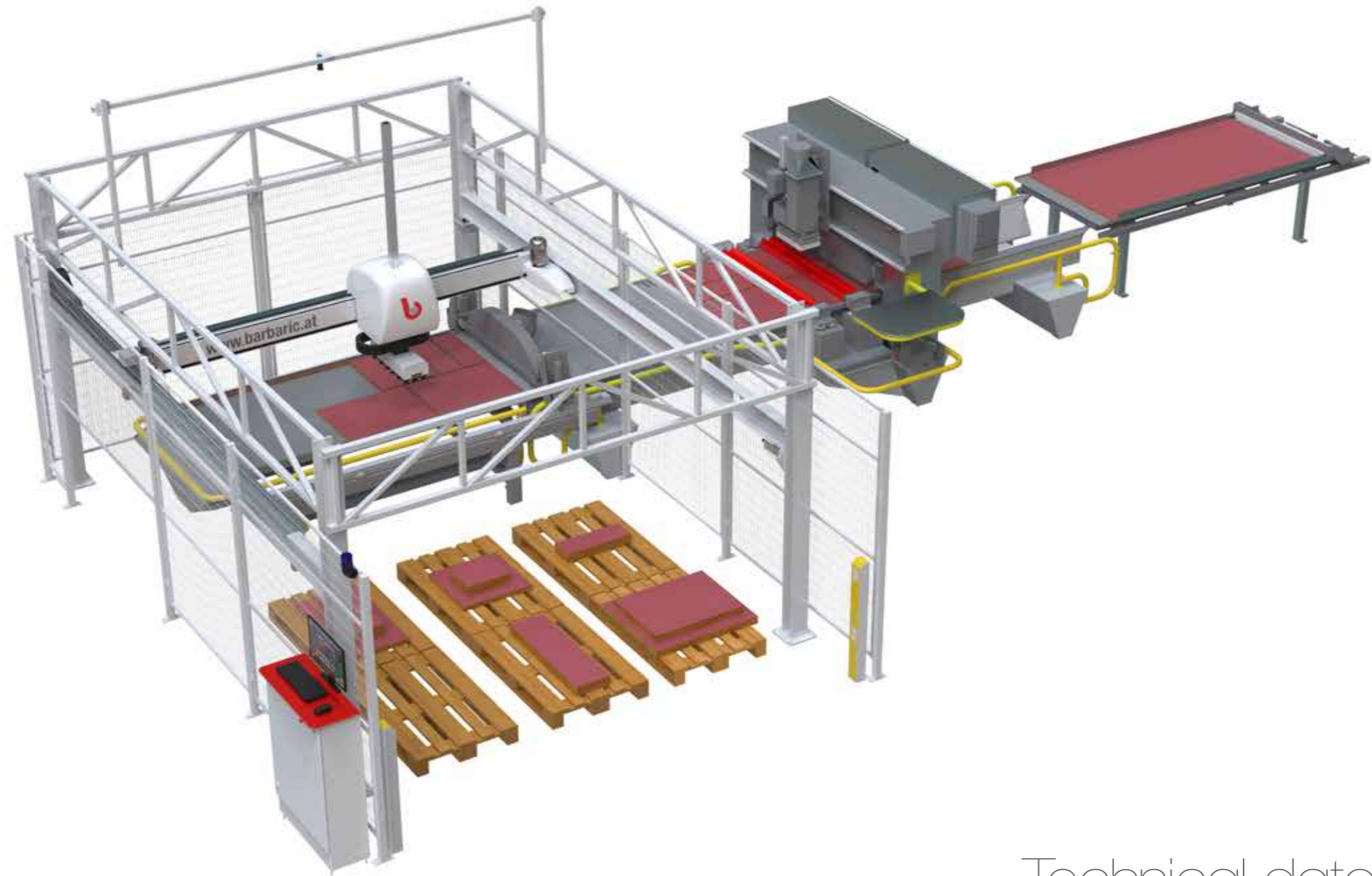
*Ideas that move.*

[www.barbaric.at](http://www.barbaric.at)

**barbaric**

Nesting Picker NST

# Nesting Picker NST



## Integration on new and existing machines

The Nesting Picker NST can be installed on both new and existing machines. The only thing that is important is an appropriately long removal belt, so that the entire nest can be properly analyzed and recorded with a camera. Interfaces to some well-known manufacturers have already been implemented.

## Highlights

- > Reliable machine from the Barbaric standard portfolio
- > Fully automatic stacking of nested parts
- > Visual recognition of the individual parts in the nest
- > Position correction for displaced parts
- > Sorting of the parts
- > Gentle parts transport
- > Saving of valuable working time

## Technical data

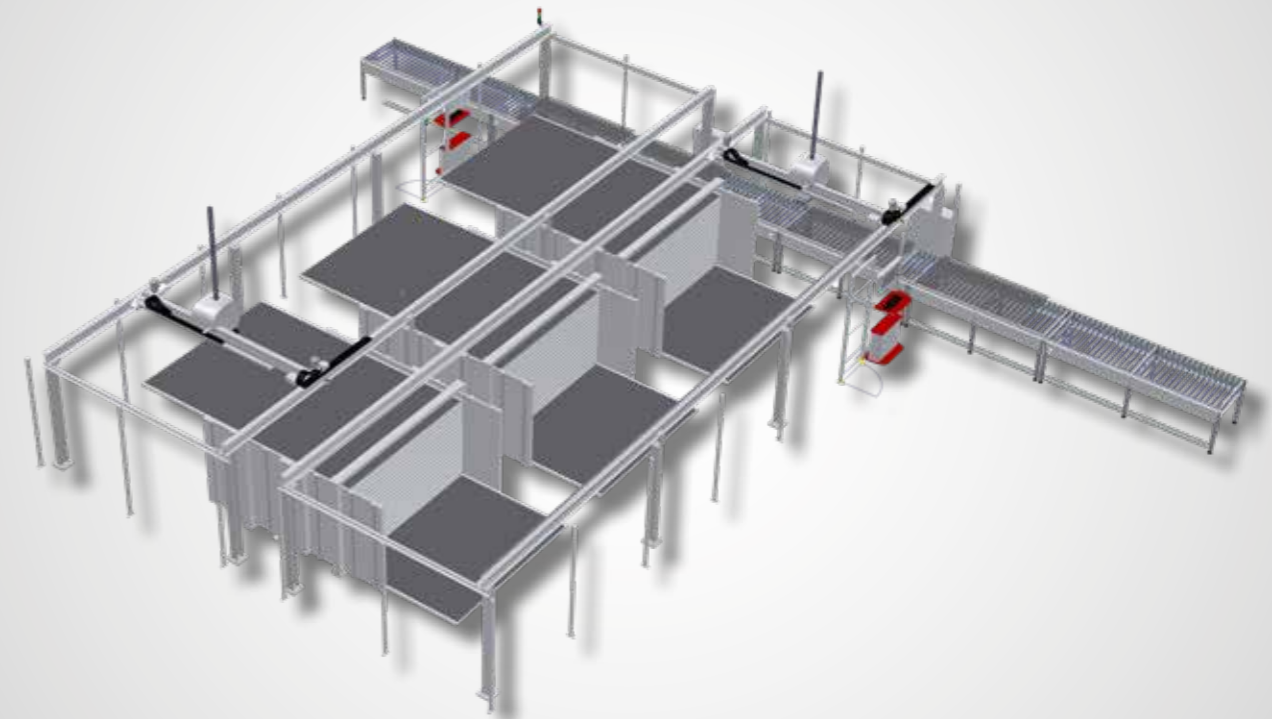
|                      | STANDARD                                |
|----------------------|---|
| » Working load       | 60 kg                                   |
| » Panel size         | min. 300 x 80 mm<br>max. 2800 x 1300 mm |
| » Panel thickness    | 8 - 60 mm                               |
| » Stroke movement    | electric motor                          |
| » Rotation movement  | electric motor                          |
| » Operating pressure | 6 bar                                   |
| » Voltage            | 400 V, 50 Hz                            |
| » Total output       | 5 kW                                    |
| » Air consumption    | 420 NI/min.                             |

Subject to technical changes.

Parts handling

# Buffer Storage PBX

## Buffering of parts in furniture manufacturing



More information

The Buffer Storage PBX assures a constant flow of parts in the production. In order to cushion different processing times of individual machines, the interim storage of parts is indispensable for a modern production line.

### Designs

- > One-sided version with a single XYZ manipulator
- > Two-sided design with two XYZ manipulators
- > Versions with various conveyor systems in the surrounding area of the buffer

### Technical data

- > Approx. 120 m<sup>2</sup> storage area in a small space
- > Cycle times of up to 6 parts/min.
- > Max. panel size 2,8 x 1,95 cm
- > Max. panel thickness 25 mm, optional: 40 mm
- > Individual designs possible
- > Each drawer is individually driven, enabling overlapping opening and closing processes

### Advantages at a glance

- > Flexibility of production
- > Individual and instantaneous access to all parts at all times
- > Increase of productivity
- > Optimization of personnel costs
- > Continuous material flow at the edgebander
- > Grouping of parts for individual orders
- > Cushioning of different processing times on individual machines
- > Unbundling of production
- > Safety buffer in case of machine failures
- > Parts tracking and visualization



*Ideas  
that move.*

[www.barbaric.at](http://www.barbaric.at)

**barbaric**



## Service / After-Sales



WE RELY ON A GOOD CUSTOMER RELATIONSHIP - EVEN AFTER THE SALE.

Quality, efficiency and innovation - three keywords that apply specifically to Barbaric's service competence. The employees of our service hotline have been with us for many years and have

excellent knowledge of our products. They will be happy to help you - no matter whether it is a spare part, maintenance or service request.

### SPARE PARTS - HOTLINE

Phone: +43 732 779800-400  
 Email: spareparts@barbaric.at  
 Mo – Th. 07:00 – 16:00  
 Fr. 07:00 – 12:00

### SERVICE - HOTLINE

Phone: +43 732 779800-300  
 Email: service@barbaric.at  
 Mo – Fr. 07:00 – 16:00

### The green idea

This machine is not only a warehouse but also helps the environment with the chosen technology. The drive and vacuum technology was chosen so intelligently that the required electricity was reduced to a minimum. The vacuum is generated directly where it is needed. Any losses are avoided. The compact yet stable design allows the use of comparatively low drive power. By accommodating several bars, the number of travel movements is drastically reduced.



## Your competent partner also in panel and parts handling for trade and industry



At Barbaric, our goal is to provide optimal solutions for every handling application. In addition to our automatic handling solutions in the field of panel and parts handling for commercial or industrial production lines, we also develop manual vacuum lifters for all remaining manual lifting processes.

### Automatic panel and part handling

Our intelligent solutions are used by many customers around the globe.

- > Panel storage systems
- > Feeding systems
- > Buffer storage
- > Return systems

are just a few examples of modern systems in the field of material handling. Each system in this area is built individually according to our customers' requirements, while existing components and proven concepts are used.

### Manual handling solutions

For customers in the wood, glass industry or for construction site use, we offer the suitable lifting equipment. Barbaric provides optimal handling solutions for safe and ergonomic lifting applications. Manual vacuum lifters from Barbaric enable efficient handling of heavy panels or glass and save valuable time in production. Heavy lifting tasks can be performed effortlessly by just one operator. By purchasing suitable handling solutions, sickness-related absences can be minimized and attractive jobs created for the employees.





# barbaric

*Ideas that move.*

## Headquarters

### **Barbaric GmbH**

Pummererstrasse 12  
4020 Linz, Austria  
Phone: +43 732 779800  
Email: office@barbaric.at

## Production facility

### **Barbaric GmbH**

Lichtenberger Strasse 37  
4201 Eidenberg, Austria

## Sales locations & subsidiaries



**Barbaric GmbH Germany**  
Lammgasse 7  
75382 Althengstett, Germany  
Phone: +43 732 779800  
Email: germany@barbaric.at



**Barbaric North America Inc.**  
301 Kitty Hawk Drive  
US-27560 Morrisville  
Phone: +1 919 425 2803  
Email: info@barbaric.us

[www.barbaric.at](http://www.barbaric.at)



Image video